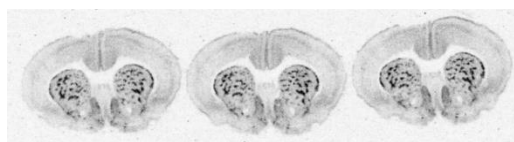


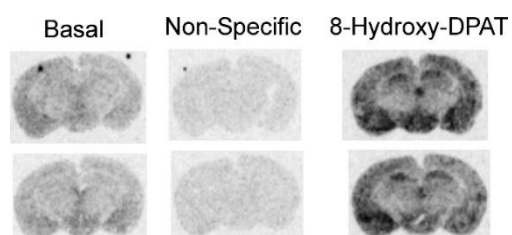
IN VITRO RECEPTOR AUTORADIOGRAPHY

Fig. 1



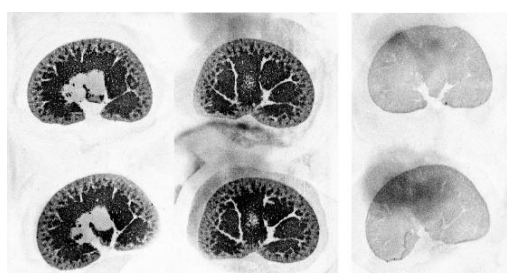
Binding of [³H]DAMGO to μ opioid in coronal sections at the level of the corpus striatum in a rat brain.

Fig. 2



[³⁵S]GTP γ S binding in rat brain slices. In the presence of the 5-HT_{1a} agonist, 8-hydroxy-DPAT (10 μ M), [³⁵S]GTP γ S binding was increased relative to basal levels in the hippocampus, ventral cortex and hypothalamus, reflecting the distribution of agonist-activated receptors. Non-specific [³⁵S]GTP γ S binding was defined using unlabeled GTP γ S (10 μ M).

Fig. 3



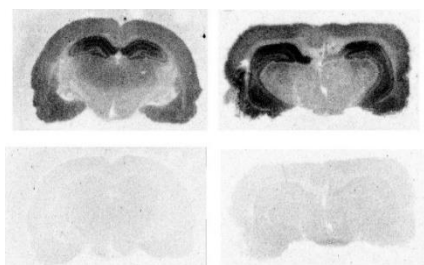
Binding of [³H]LRRK2-IN-1 to the LRRK2 enzyme in rat kidney. Sections on the left are total binding and the two sections on the right non-specific binding, defined using unlabeled LRRK2-IN-1 (10 μ M).

Fig. 4



Binding of [³⁵S]TBPS to GABA_a receptors in the dog cerebellum. The two sections on the left are total binding and the two sections on the right non-specific binding, defined using picrotoxin (30 μ M)

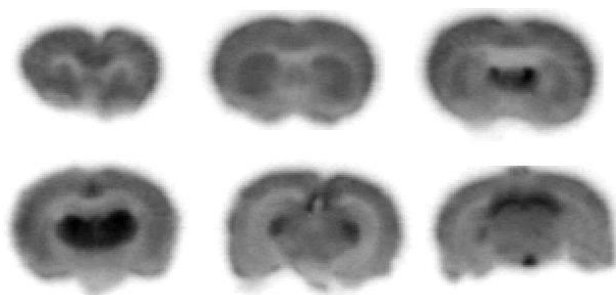
Fig. 5



[³H]MK801 binding to NMDA receptors in coronal sections in the rat brain. Upper two sections are total binding and lower two sections non-specific binding, defined using unlabeled MK801 (10 μM).

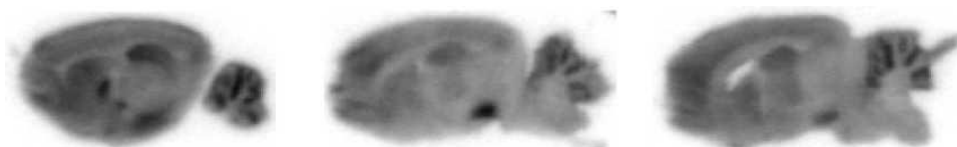
EX VIVO RECEPTOR AUTORADIOGRAPHY

Fig. 1



Ex vivo autoradiography in the brain of a rat administered the radiofluorinated $\alpha_4\beta_2$ nicotinic receptor radioligand, [¹⁸F]A85380. Sections (coronal) imaged using phosphor imaging. Radioactivity distribution is consistent with selective binding to the $\alpha_4\beta_2$ brain nicotinic receptor, with high levels of binding in the thalamic regions and superior colliculus.

Fig. 2



Ex vivo autoradiography of [¹²⁵I]AM2233 binding to CB1 cannabinoid receptors in the rat brain. Sagittal brain sections from a rat injected with [¹²⁵I]AM2233 and sacrificed 30 minutes later. High levels of radioactivity are apparent in the cerebellum, hippocampus, globus pallidus and substantia nigra, consistent with binding to the CB1 cannabinoid receptor.